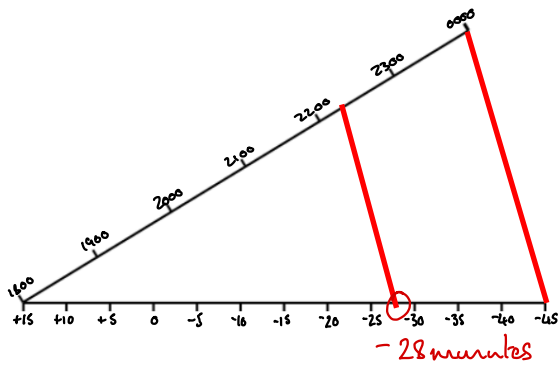


What is the height of tide at Blockhouse creek on the 6th of April at 1915?

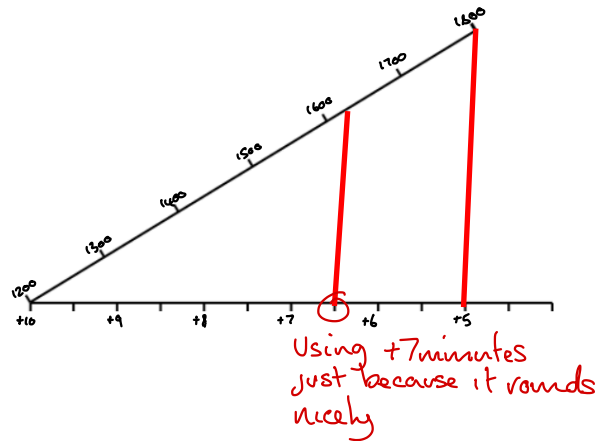
Secondary port calculation sheet

	Time		Heights		Range
	HW	LW	HW	LW	
Standard Port	22 15	16 13	5.9	1.0	4.9
Correction	-0028	+0007	+0.5	0.0	
Adjust for DST if required	+0100	+0100			
Secondary Port	22 47	17 20	6.4	1.0	

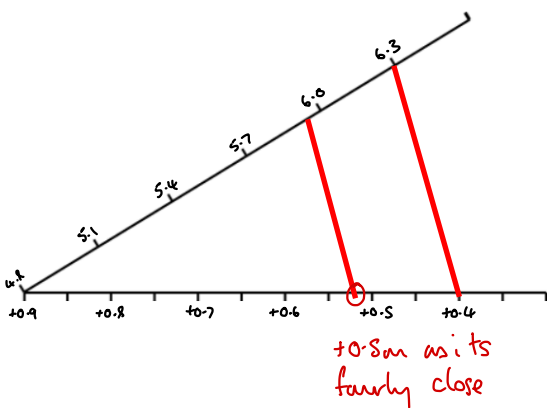
HW Time correction



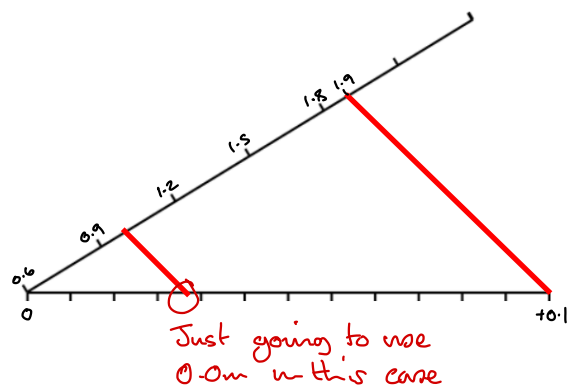
LW Time correction



HW Height correction



LW Height correction



LANGTON HARBOUR

