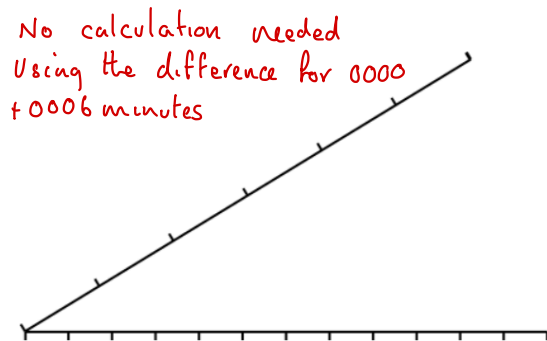


What is the height of tide at Bob's creek on the 23rd of February at 0130?

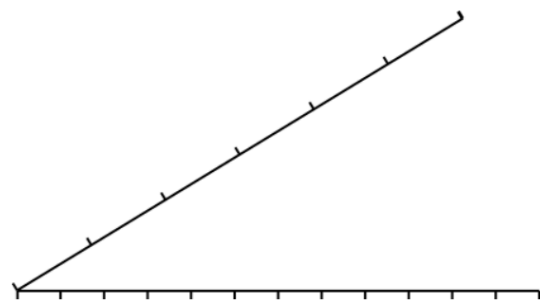
Secondary port calculation sheet

	Time		Heights		Range
	HW	LW	HW	LW	
Standard Port	0000	0455	4.8	0.9	3.9
Correction	+0006	+0005	+0.3	0.0	
Adjust for DST if required					
Secondary Port	0006	0500	5.1	0.9	

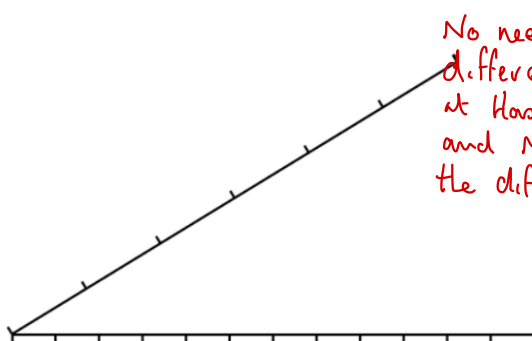
HW Time correction



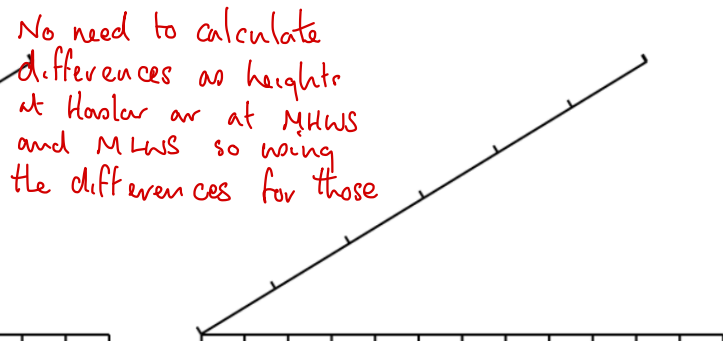
LW Time correction



HW Height correction



LW Height correction



HASLAR HARBOUR

